




 01,Rue Ibn Tofeil (Ex Alexandre Nobel) Gambetta,ORAN 31000-ALGERIA

 +213 41 83 14 49 /0560 90 73 31 /06-58-03-68-23 /0554 50 63 52

 <contact@securamag-technologie.com>

 /securamag

 www.securamag-technologie.com



ABOUT US

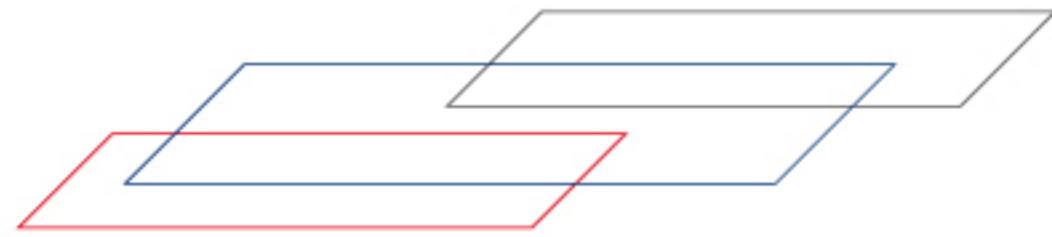
SECURAMAG-TECHNOLOGIE

Avec 15 ans d'expérience notre société SECURAMAG- technologie est spécialisée

Dans la protection des commerces de tous genre.

Magasin d'habillements et chaussures, superette et hypermarché, opticien, parfumerie et Cosmétique, Pharmacie et para-pharm., libraire et bibliothèque

Notre société assure la livraison, installation et la mise en marche. SAV (service après vente) des plus efficaces.



AM SYSTEM
PRODUCT BROCHURE

01



EC-503

Main Material: Aluminem Alloy
Center Frequency: 8.2Mhz/10Mhz
Working Mode: TX+RX
Detection range: 0.9-2M(Depend on tag)
Appearance Size: 1550*360*35mm
Packing Size: 1580*380*130mm
Packing Unit: 2pcs/ctn
Packing G.W.: 12kgs/ctn



EC-506

Main Material: Aluminem Alloy
Center Frequency: 8.2Mhz/10Mhz
Working Mode: TX+RX
Detection range: 0.9-2M(Depend on tag)
Appearance Size: 1580*380*30mm
Packing Size: 1630*440*210mm
Packing Unit: 2pcs/ctn
Packing G.W.: 15kgs/ctn



EC-509

Main Material: Aluminem Alloy
Center Frequncy: 8.2Mhz/10Mhz
Working Mode: TX+RX/MONO
Detection range: 0.9-2.8M(Depend on tag)
Appearance Size: 1540*400*40mm
Packing Size: 1560*440*120mm
Packing Unit: 2pcs/ctn
Packing G.W.: 15kgs/ctn



EC-510

Main Material: Aluminem Alloy
Center Frequncy: 8.2Mhz/10Mhz
Working Mode: TX+RX/MONO
Detection range: 0.9-2.8 M
(Depend on tag)
Appearance Size: 1520*440*40mm
Packing Size: 1630*520*190mm
Packing Unit: 2pcs/ctn
Packing G.W.: 15kgs/ctn



EC-511

Main Material: Aluminem Alloy
Center Frequncy: 8.2Mhz/10Mhz
Working Mode: TX+RX/MONO
Detection range: 0.9-2.8M(Depend on tag)
Appearance Size: 1520*405*45mm
Packing Size: 1680*450*150mm
Packing Unit: 2pcs/ctn
Packing G.W.: 18kgs/ctn



EC-512

Main Material: Aluminem Alloy
Center Frequncy: 8.2Mhz/10Mhz
Working Mode: TX+RX/MONO
Detection range: 0.9-2.8M(Depend on tag)
Appearance Size: 1670*440*24mm
Packing Size: 1720*480*240mm
Packing Unit: 2pcs/ctn
Packing G.W.: 18kgs/ctn



EC-518

Main Material: Acrylic
Center Frequency: 8.2Mhz/10Mhz
Working Mode: TX+RX
Detection range: 0.9-2M(Depend on tag)
Appearance Size: 1520*200*20mm
Packing Size: 1535*265*155mm
Packing Unit: 1pcs/ctn
Packing G.W.: 12.5kgs/ctn



EC-519

Main Material: Acrylic
Center Frequency: 8.2Mhz/10Mhz
Working Mode: TX+RX
Detection range: 0.9-2M(Depend on tag)
Appearance Size: 1525*200*20mm
Packing Size: 1590*290*155mm
Packing Unit: 1pcs/ctn
Packing G.W.: 12.5kgs/ctn



EC-522

Main Material: Acrylic
Center Frequency: 8.2Mhz/10Mhz
Working Mode: TX+RX
Detection range: 0.9-2M(Depend on tag)
Appearance Size: 1530*380*20mm
Packing Size: 1530*380*20mm
Packing Unit: 1pcs/ctn
Packing G.W.: 12.5kgs/ctn



EC-524

Main Material: Acrylic
Center Frequency: 8.2Mhz/10Mhz
Working Mode: TX+RX
Detection range: 0.9-2M(Depend on tag)
Appearance Size: 1575*380*20mm
Packing Size: 1615*475*145mm
Packing Unit: 1pcs/ctn
Packing G.W.: 12.5kgs/ctn



EC-AO6WD

Operating Voltage: 110~230V 50~60HZ
 Rated Power: ≤15W
 Color:Black/White
 Center Frequency:58Khz
 Working Mode: TX+RX OR MONO
 Technology Source:Dexilon
 Detection Range:0.9-2.8M(Depend on tag)
 Main Material::ABS plastic
 Appearance Size:1500*450*120
 Packing Size:1520*480*250mm
 Packing Unit:2pcs/ctn
 Packing G.W:20kgs/ctn



EC-AMT04

Operating Voltage: 110~230V 50~60HZ
 Rated Power: ≤15W
 Color:Black/White
 Center Frequency:58Khz
 Working Mode: TX+RX OR MONO
 Technology Source:Sensormatic
 Detection Range:0.9-2.8M(Depend on tag)
 Main Material::ABS plastic
 Appearance Size:1440*350*96mm
 Packing Size:1520*440*140mm
 Packing Unit:1pcs/ctn
 Packing G.W: Master 11kgs/ctn Slave 9kgs/ctn



EC-AMT05

Operating Voltage: 110~230V 50~60HZ
 Rated Power: ≤15W
 Color:Black/White
 Center Frequency:58Khz
 Working Mode: TX+RX OR MONO
 Technology Source:Dexilon
 Detection Range:0.9-2.8M(Depend on tag)
 Main Material::ABS plastic
 Appearance Size:1500*400*134mm
 Packing Size:1580*440*230mm
 Packing Unit:2pcs/ctn
 Packing G.W:20kgs/ctn



EC-AMT06

Main Material: ABS plastic
 Center Frequency: 58Khz
 Working Mode: TX+RX OR MONO
 Detection range: 1-2.2M(Depend on tag)
 Appearance Size: 1500*450*115
 Packing Size: 1520*480*250mm
 Packing Unit: 2pcs/ctn
 Packing G.W: 20kgs/ctn



EC-AMT07

Operating Voltage: 110~230V 50~60HZ
 Center Frequency: 58Khz
 Working Mode: TX+RX OR MONO
 Technology Source: Dexilon
 Detection Range: 0.9-2.8M(Depend on tag)
 Main Material: ABS plastic+Acrylic
 Appearance Size: 1600*395*115
 Packing G.W: Master 16kgs/ctn
 Slave 14kgs/ctn
 Packing Size: 1610*410*210mm
 Packing Unit: 1pcs/ctn



EC-AMT08

Main Material: ABS plastic+Acrylic
 Center Frequency: 58Khz
 Working Mode: TX+RX OR MONO
 Detection range: 1-2.2M(Depend on tag)
 Appearance Size: 1580*425*45mm
 Packing Size: 1640*500*150mm
 Packing Unit: 1pcs/ctn
 Packing G.W: 16kgs/ctn



EC-AMT09

Main Material: ABS plastic
 Center Frequency: 58Khz
 Working Mode: TX+RX OR MONO
 Detection Range: 1-2.4M(Depend on tag)
 Appearance Size: 1540*440*14mm
 Packing Size: 1600*510*25mm
 Packing Unit: 2pcs/ctn
 Packing G.W: 24kgs/ctn



EC-AMT10

Main Material: ABS plastic
 Center Frequency: 58Khz
 Working Mode: TX+RX OR MONO
 Detection range: 1-2.4M(Depend on tag)
 Appearance Size: 1560*500*14mm
 Packing Size: 1630*600*24mm
 Packing Unit: 2pcs/ctn
 Packing G.W: 22kgs/ctn



EC-AMT10A

Main Material: Acrylic
 Center Frequency: 58Khz
 Working Mode: TX+RX OR MONO
 Detection range: 1-2.4M(Depend on tag)
 Appearance Size: 1560*500*14mm
 Packing Size: 1600*510*25mm
 Packing Unit: 2pcs/ctn
 Packing G.W: 22kgs/ctn



EC-AMT13

Operating Voltage: 110~230V 50~60HZ
 Rated Power: ≤15W
 Color:Black/White
 Center Frequency:58Khz
 Working Mode: TX+RX OR MONO
 Technology Source:WG
 Detection Range:0.9-2.8M(Depend on tag)
 Main Material::ABS plastic
 Appearance Size:1500*400*80mm
 Packing Size:1560*500*230mm
 Packing Unit:2pcs/ctn
 Packing G.W:22kgs/ctn



EC-AMT14

Main Material: ABS plastic
 Center Frequency: 58Khz
 Working Mode: TX+RX OR MONO
 Detection Range: 0.9-2.8M(Depend on tag)
 Appearance Size: 1570*430*14mm
 Packing Size: 1670*520*210mm
 Packing Unit: 1pcs/ctn
 Packing G.W: 11kgs/ctn



EC-AMT18

Operating Voltage: 110~230V 50~60HZ
 Rated Power: ≤15W
 Color:Black/White
 Center Frequency:58Khz
 Working Mode: TX+RX OR MONO
 Technology Source:WG
 Detection Range:0.9-2.8M(Depend on tag)
 Main Material::ABS plastic
 Appearance Size:1630*360*80mm
 Packing Size:1690*415*270mm
 Packing Unit:2pcs/ctn
 Packing G.W:11kgs/ctn



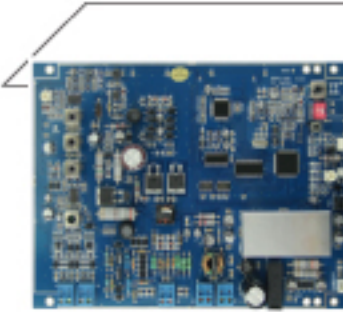
EC-AO1E

Operating Voltage: 110~230V 50~60HZ
 Rated Power: ≤15W
 Color: Black/White
 Center Frequency: 58Khz
 Working Mode: TX+RX OR MONO
 Technology Source: AM 1080
 Detection Range: 0.9-2.8M(Depend on tag)
 Main Material: ABS plastic
 Appearance Size: 1500*450*135
 Packing Size: 1560*430*250mm
 Packing Unit: 2pcs/ctn
 Packing G.W:20kgs/ctn



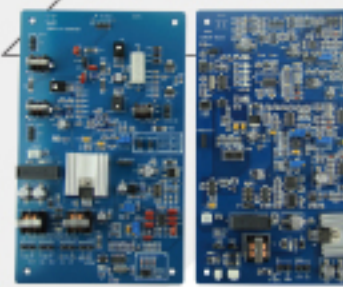
EC-AO3E

Operating Voltage: 110~230V 50~60HZ
 Rated Power: ≤15W
 Color:Black/White
 Center Frequency:58Khz
 Working Mode: TX+RX OR MONO
 Technology Source:AM 1080
 Detection Range:0.9-2.8M(Depend on tag)
 Main Material::ABS plastic
 Appearance Size:1480*400*150mm
 Packing Size:1650*590*250mm
 Packing Unit:1pcs/ctn
 Packing G.W: Master 12kgs/ctn Slave 11kgs/ctn



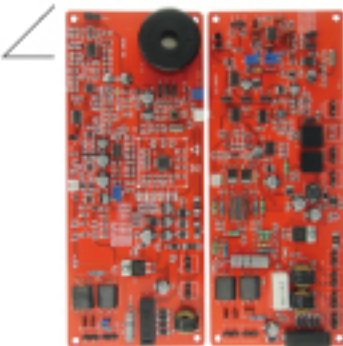
RF V3.51

Center Frequency: 8.2Mhz
 Dimension: 155x210MM
 Descriptions: DSP technology ,high sensitivity,less false alarm,auto sychronization.
 Detection range: With different antenna 90~280CM(also depend on tag)



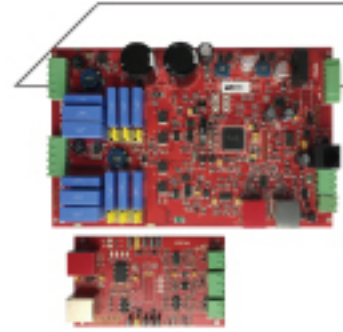
RF 3920

Center Frequency: 8.2Mhz/10Mhz
 Dimension: 196X120MM
 Descriptions: high sensitivity,less false alarm. Stable performance.
 Detection range: With different antenna 80~280CM(also depend on tag)



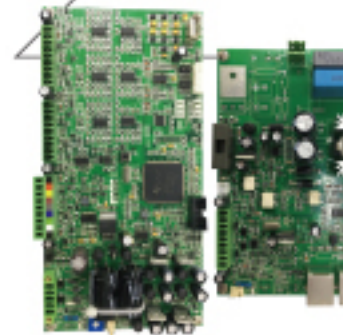
RF 9500

Center Frequency: 8.2Mhz
 Dimension: 205X77.5MM
 Descriptions: high sensitivity,less false alarm. Stable performance.
 Detection range: With different antenna 120~280CM(also depend on tag)



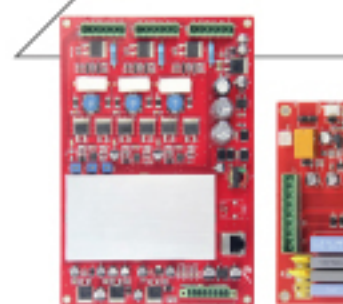
AM1061 Spain Technology

Center Frequency: 58Khz
 Dimension: Master 195X120MM
 Slave 107X63MM
 Descriptions: DSP technology ,high sensitivity, less false alarm. Stable performance. Computer software debugging.
 Detection range: With different antenna 80~280CM(also depend on tag)



AM 1070

Center Frequency:58Khz
 Dimension: Master 200X110MM
 Slave 160X110MM
 Descriptions:NEW technology ,high sensitivity, less false.Stable performance. Remote Debugging,Power Built.
 Detection range:With different antenna 80~280CM(also depend on tag)



AM 1080

Model Number:1080
 Frequency:58Khz
 Operate Voltage:110-230V 50-60HZ
 Working Mode:TX+RX/MONO
 Detection Range:0.9-2.5M (also depend on tag)
 Dimension:150*210MM
 Operating temperature:0°C to 40°C
 Power:24V DC, 2A



INVISIBLE ANTENNA

PRODUCT BROCHURE

14



INVISIBLE ANTENNA

Size: 960X640X18mm

Color: black or red

Center frequency: 58KHz

Detection of highly: 1.3m-1.6m



INVISIBLE ANTENNA CONTROLLER

Size: 352X302X70mm

Color: silver

Detection of highly: 1.3m-1.6m

installation: hidden

Environmental parameters: indoor 0-35℃ humidity 0-90%

Center frequency: 58KHz



INVISIBLE ANTENNA

PRODUCT BROCHURE

15



INVISIBLE ANTENNA

Size: 60×80mm/60×160mm

Color: white

Outer box size: 82×10×6cm/162.5×

10×68cm

Gross weight: 4KGS/7.6KGS



INVISIBLE ANTENNA CONTROLLER

Size: 38.5×21.5×7cm

Color: black

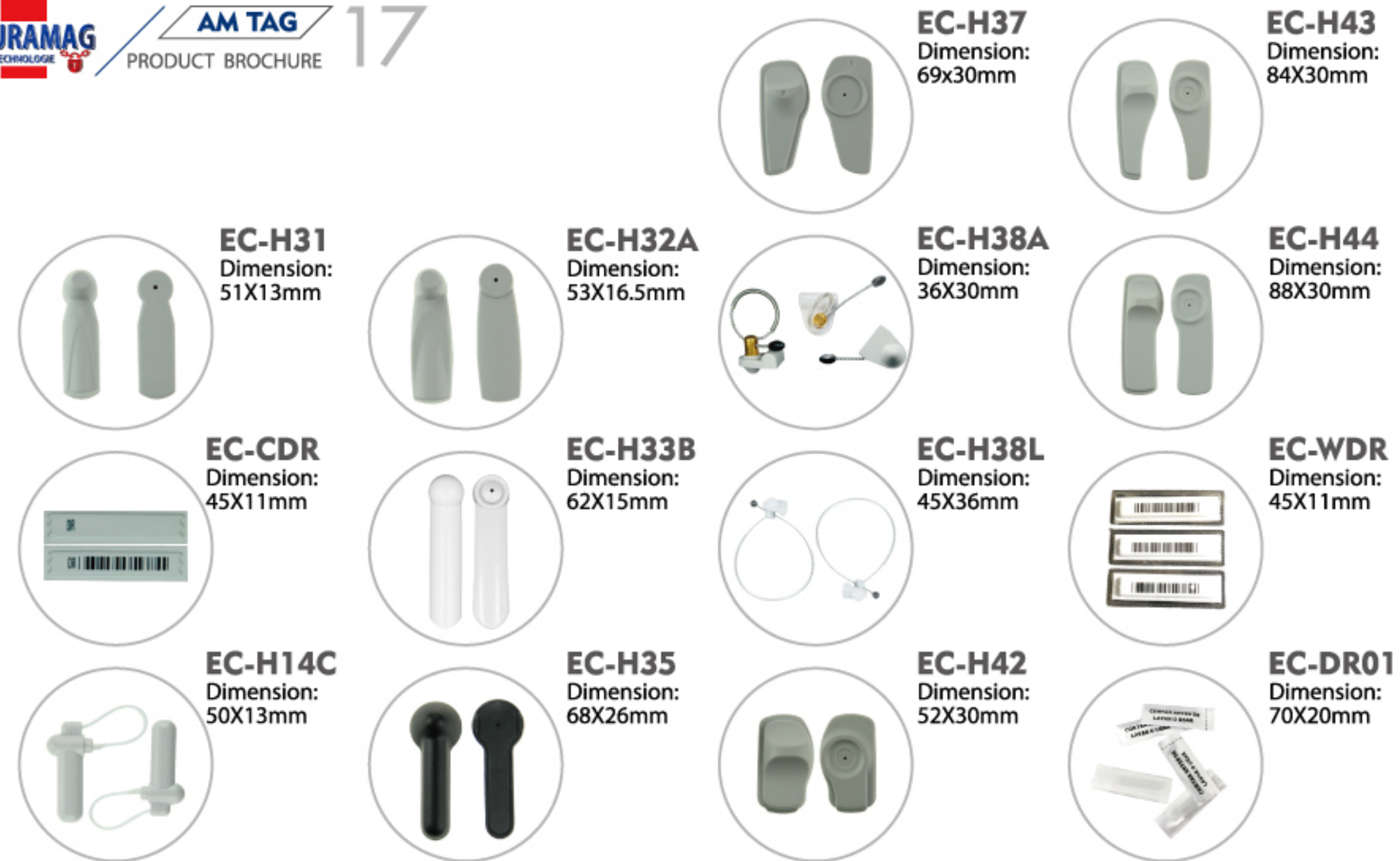
Frequency of work: 58kHz

Power Insurance: 5A,250V

Current value: 2A

Input Power: >200W







EC-D01
 Dimension:
 Ø70.7X23mm



EC-D04
 Dimension:
 Ø74X46mm



EC-D07
 Dimension:
 Ø75X35mm



EC-D08
 Dimension:
 Ø74X46mm



EC-D11
 Dimension:
 Ø21.5X57mm



EC-D14
 Dimension:
 Ø63X36mm



EC-HD01
 Dimension:
 185X90mm



EC-HD02
 Dimension:
 150X102mm



EC-HD03
 Dimension:
 220X180mm



EC-HD04
 Dimension:
 245X114X75mm



EC-EM02
 Appearance Size:
 145X55X4cm



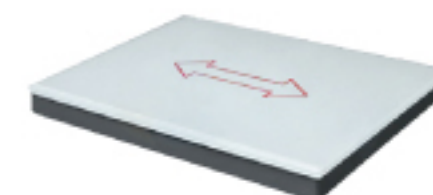
EC-EM03
 Appearance Size:
 150X40X3cm



EC-EM05
 Appearance Size:
 150X40X3cm



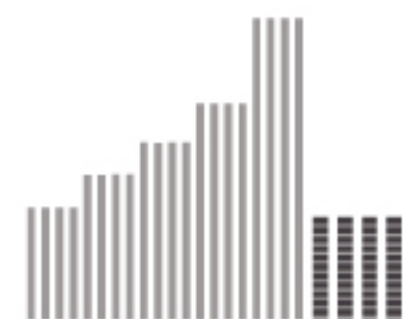
EC-DC11
 Appearance Size:
 270X215X75cm



EC-D13
 Appearance Size:
 270X205X35cm



EC-DC14
 Appearance Size:
 336X222X91cm



EC-M01
 Length: 5-16cm



EC-768
PAD Dimension:
24X24cm



EC-769
PAD Dimension:
24.5X23.5cm



EC-D886
PAD Dimension:
23X19.4X5.5cm



EC-D887
PAD Dimension:
21.5X18.6X6.3cm



EC-HT03
Dimension:
345X75mm



EC-HT05
Dimension:
180X93X41mm



GT-730
Product Name
Industrial-grade Wired
Laser Barcode Scanner



X-530
Product Name
Wired Laser Barcode
Scanner with Stand



X-660
Product Name
Bluetooth Laser
Barcode Scanner



GT-8800
Product Name
Desktop 1D Image
Barcode Scanner



GT-9800
Product Name
Desktop 1D Image
Barcode Scanner



CASH REGISTER
Power
12V-24V DC(±10%)
compatible